

# SPADE

Secure, Persistent & Aware Data Ecosystem

SPADE is an integrated management information system that will combine multiple datasets and applications into one combined ecosystem

## SPADE Subsystems

### CTOC dashboard

Data visualization of near real time status of weather and performance factors

### HxGN EAM

Tracking of work requests, purchase requisitions, inventory, & asset management

### Information Management and Reporting System

Using smart forms and automated ingestion processes for data collection used for reporting and system monitoring

### Microsoft Environment

Dedicated environment utilized for files storage, email communications & alerting, chat collaboration, and Single-Sign-On

## Key Functionality & Metrics

---

Improve decision making

---

Optimize deployment

---

Increase operations safety

---

Enhance mission planning and forecasting

---

Eliminate resource inefficiencies

---

Streamline communication and collaboration

---

Processing over 650K points of data, all updated in near real time

---

Provided 24/7 operational availability

---

Supporting over 500 user accounts

---

## Critical Data Elements

---

Weather data

---

System health

---

Asset management

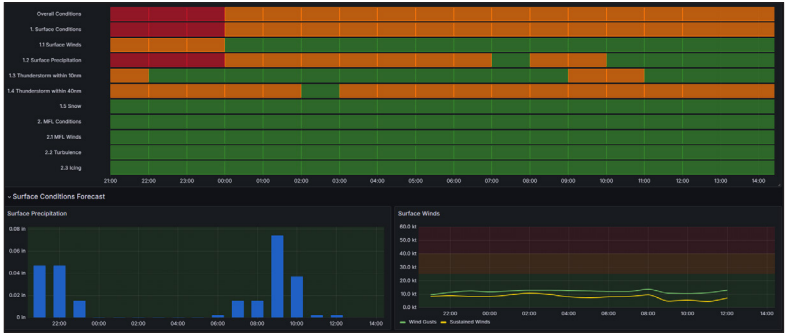
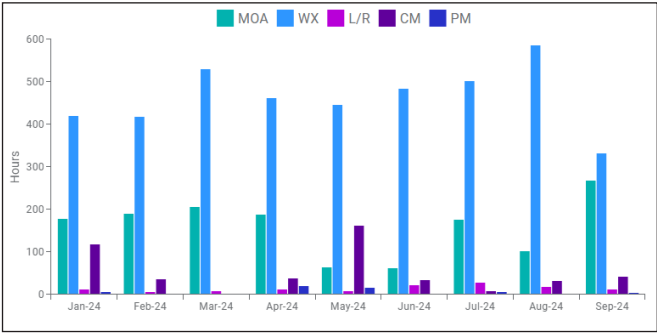
---

Workforce metrics

---

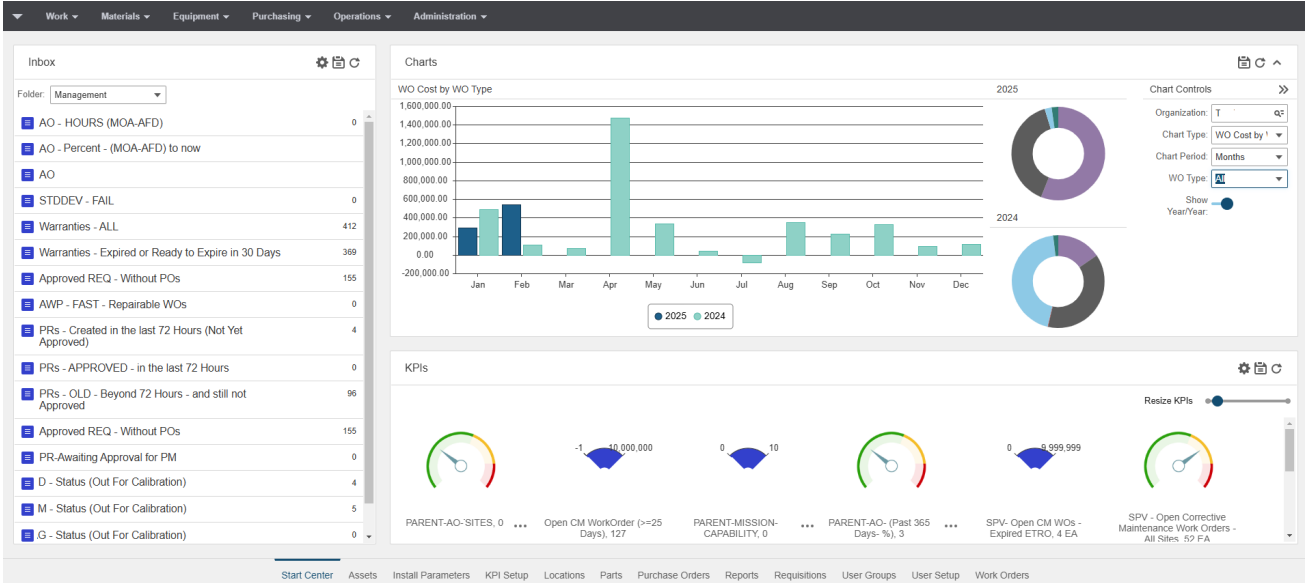
Data management & weather analysis

SPADE Dashboards provide visualizations and near real-time insights into flight operations, weather, and network status, along with up-to-date performance management metrics. SPADE utilizes localized, mission-tailored forecasts at the surface & various altitudes, weather data is provided for up to 10 days in advance. This allows SPADE users adequate time to develop plans of action, access the risk and determine any operational impact. All data and dashboards will be made available to users through direct access accounts which will provide 24/7/365 visibility into the latest information and statuses. Access is managed through Single-Single-On (SSO).



Operational overview & asset management

SPADE ensures that data is fully synchronized between interrelated logistics and maintenance activities, from inventory tracking and generating purchase orders to updating supplier records and accepting receipt of new inventory. Users are able to document and track failure trends for all repairable components. Our system generates reports for the number of repairs over time by serial number, to provide a consumption level of specific components.



Collaborating with QinetiQ

At QinetiQ we bring organizations and people together to provide innovative solutions to real world problems, creating customer advantage. Working with our partners and customers, we collaborate widely, working in partnership, listening hard and thinking through what customers need. Building trusted partnerships, we are helping customers anticipate and shape future requirements, adding value and future advantage.

For further information please contact:

1800 Tysons Blvd, Suite 750  
Tysons, VA 22102  
+1 781 684 4000  
SPADE@us.qinetiq.com